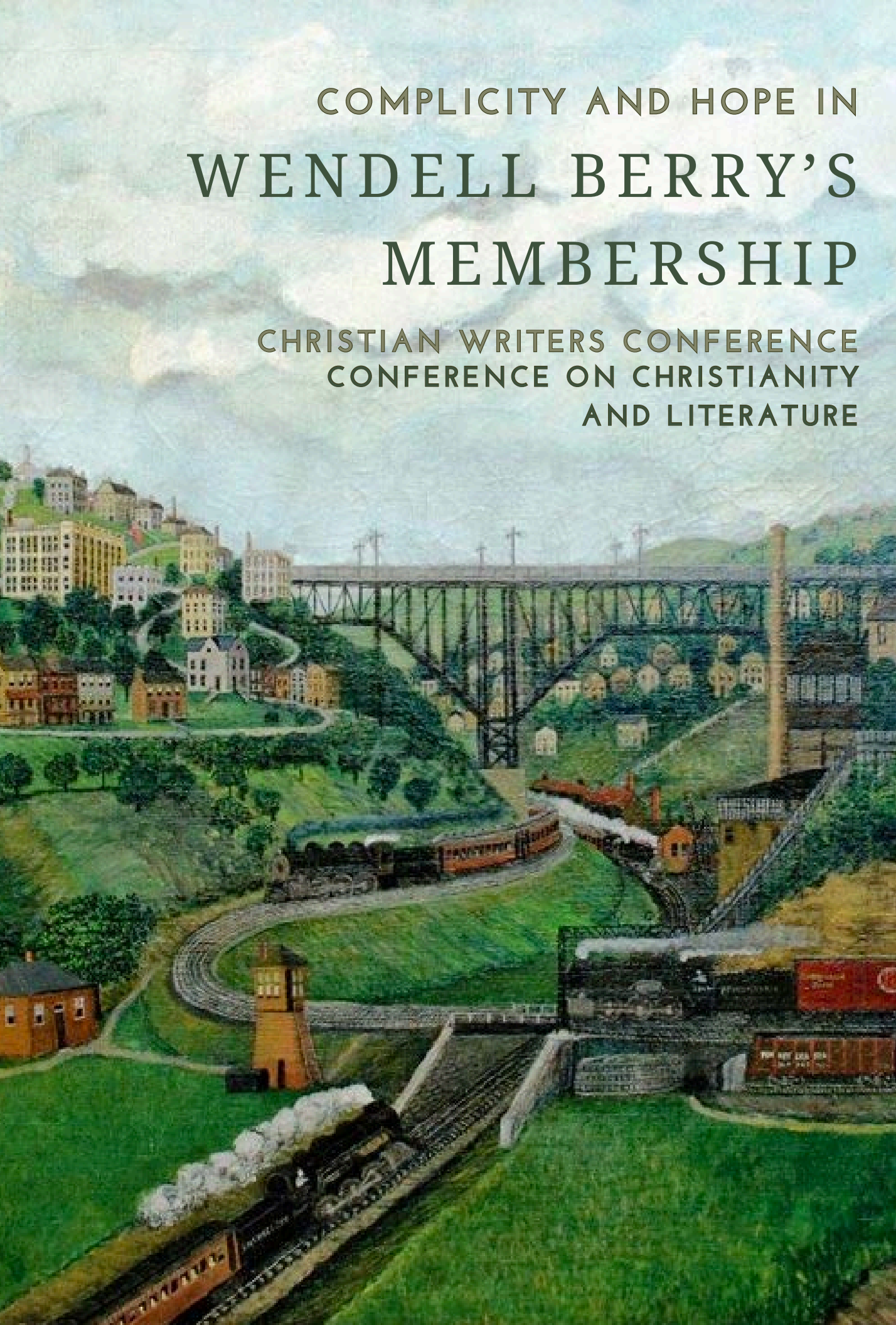


FEBRUARY 21-22, 2025 GROVE CITY COLLEGE, GROVE CITY, PA

COMPLICITY AND HOPE IN  
WENDELL BERRY'S  
MEMBERSHIP

CHRISTIAN WRITERS CONFERENCE  
CONFERENCE ON CHRISTIANITY  
AND LITERATURE





# ABOUT THE CONFERENCE

Hosted by Grove City College's Department of English, the annual Christian Writers Conference, held each spring, brings together writers, scholars, and students to explore and discuss the nature of writing and the role faith plays in it.

The Conference on Christianity and Literature is an interdisciplinary society dedicated to exploring the relationships between Christianity and literature. Organized formally in 1956, CCL is dedicated to both scholarly excellence and collegial exchange and includes hundreds of members from a variety of academic institutions and religious traditions from the United States, Canada, and more than a dozen other countries.

## From Wendell Berry's *Remembering*

*Heavenly Muse, Spirit who brooded on  
The world and raised it shapely out of nothing,  
Touch my lips with fire and burn away  
All dross of speech, so that I keep in mind  
The truth and end to which my words now move  
In hope. Keep my mind within that mind  
Of which it is a part, whose wholeness is  
The hope of sense in what I tell. And though  
I go among the scatterings of that sense,  
The members of its worldly body broken,  
Rule my sight by vision of the parts  
Rejoined. And in my exile's journey far  
From home, be with me, so I may return.*

# TABLE OF CONTENTS

Schedule .....p.3

Session Information .....p.5

Andrew Peterson.....p.10

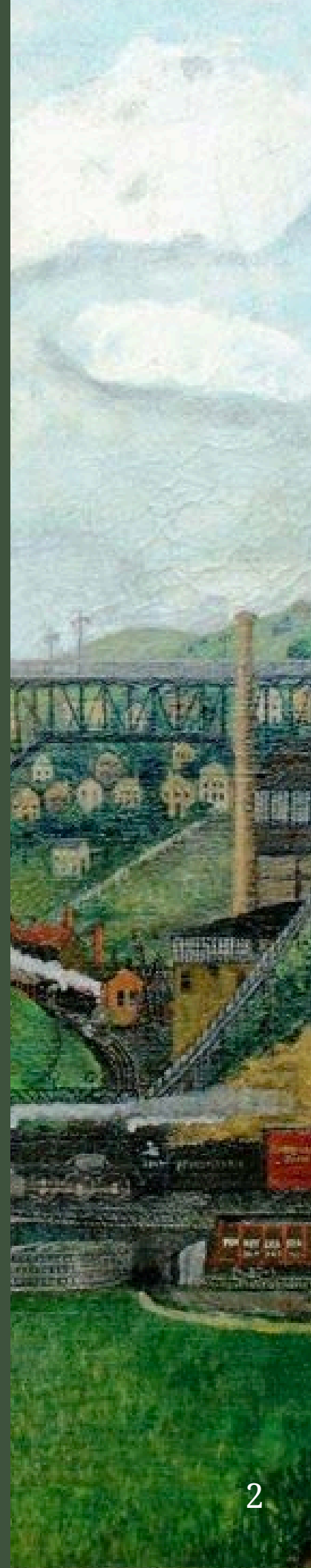
Map .....p.11

Lunch Options.....p.12

Bookstore .....p.12

Shuttle Information .....p.12

Parking Information.....p.12



# SCHEDULE

Thursday, February 20th, 2025

Starting at 7pm, people are welcome to gather at Timber Creek, Grove City, PA for conversation.

Friday, February 21st, 2025

- |             |   |
|-------------|---|
| 8:30a-4:30p | Registration Table in Rathburn (28)*              |
| 9:00-10:30a | Session 1**                                       |
| 11:00-12p   | Andrew Peterson Chapel in Harbison (2)            |
| 12:00-1p    | Lunch (on your own)***                            |
| 1:00-2:30p  | Session 2   |
| 3:00-4p     | Andrew Peterson keynote in Ketler Auditorium (13) |
| 5:00-7p     | Conference Banquet in Old Map (3)                 |
| 7:30p       | Andrew Peterson concert in Crawford (1)           |

# SCHEDULE

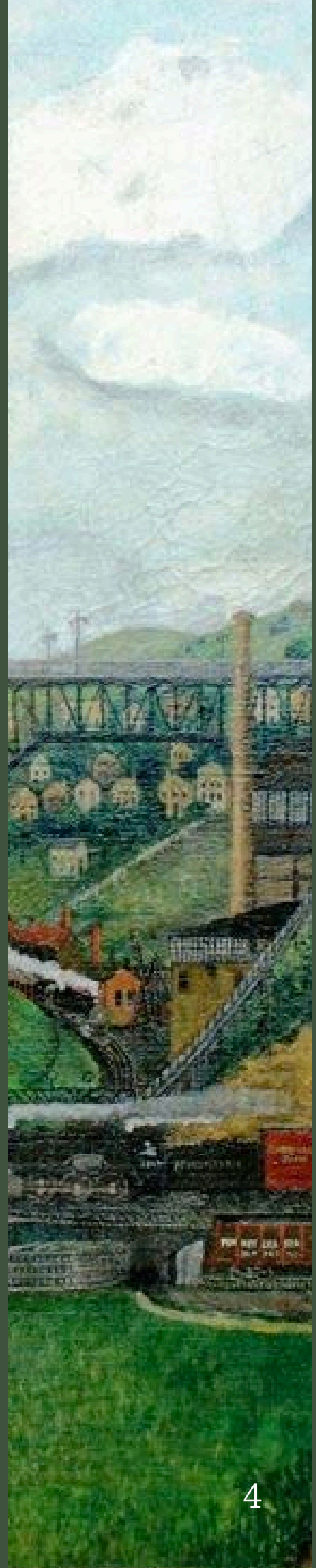
Saturday, February 22nd, 2025

8:30-9a	Registration Table in Rathburn (28)
9:00-10:30a	Session 3
11:00-12:30p	Session 4
12:30p	Catered Lunch in Old Map (3)
2:00-3:30p	Session 5

\*Note: See page 11 for map with corresponding numbers for all locations

\*\*Note: See pages 5-9 for further information about each session

\*\*\*Note: See page 12 for lunch options on campus





# SESSION 1

Friday, 9:00-10:30a

## 1.A Wendell Berry's Life and Art, Rathburn Hall, Morledge (28)

**Chair:** Scott Moore

Shirley Kilpatrick, Professor Emerita of English and Humanities at Geneva College, *A Toilet Seat for Tanya*

Jeffrey Bilbro, Associate Professor of English at Grove City College, "This Old Injury of Love and Grief": How Andy Catlett Comes to Know the Christ Who Put on All Our Flesh

Luke Rakestraw, Tates Creek Presbyterian Church, *Wendell Berry: The Holy Fool as Hope for the World*

## 1.B A Pedagogy of Remembering: Reading Community, Faith, and Neighbor Love in the Nineteenth-Century Journals of Martha E. McMillan, SHAL 109 (10)

**Chair:** Adam Loretto

Michelle G. Wood, Professor of English at Cedarville University, *A Pedagogy of Remembering: Teaching the Martha E. McMillan Journal Collection*

Emma Bapst, Cedarville University, *Hospitality Amid Grief in 19th-century Cedarville, Ohio*

Brodie Crowder, Cedarville University, *Living in Community: Friendship and Hospitality in Martha McMillan's 1889 Journal*

## 1.C Hope in Dark Times, Rathburn Hall, Grace (28)

**Chair:** Annie Shepherd

Kelsey Madsen, Associate Professor of French at Grove City College, *Resisting the Contagion of Indifference: Transcendent Hope Amid Secular Despair in Georges Bernanos's *Diary of a Country Priest**

Alex Sosler, Assistant Professor of Bible and Ministry at Montreat College, *Enclosure and Subsistence in Southern Appalachia: Reading Kingsolver's *Demon Copperhead* with Wendell Berry*

Sophia Camillone, English major at Cedarville University, *Seeing the Unseeable with Wonder in *All the Light We Cannot See**

# SESSION 2

Friday, 1:00-2:30p

## 2.A Wendell Berry and Membership, Rathburn Hall, Morledge (28)

**Chair:** Andrew Harvey

Mary Grace Mangano, Professor in the University Core Curriculum at Seton Hall University, *Being of Use in One's Native and Chosen Place: Wendell Berry on William Carlos Williams*

Eric Miller, Professor of History and the Humanities at Geneva College, *A Presumption of Wholeness: James Baker Hall, Wendell Berry, and Modernist Kentucky*

Meghan Wells, English major at Cedarville University, *Fragile Immanence: Covenant Community in *Pilgrim at Tinker Creek* and *Jayber Crow**

## 2.B Place in Genre Fiction, Rathburn Hall, Grace (28)

**Chair:** Elizabeth Stice

Adam Loretto and Iris Noth, Grove City College, *Anti-Triumphalism: Reflections on Berryan Science Fiction*

Geoffrey Reiter, Lancaster Bible College, *"I Never Can Be Tied to Raw, New Things": The Supernatural Glory and Terror of Place in Weird Horror Fiction*

Adelyn Olson, Cedarville University, *Creation, Exile, and Divine Authority: A Wendell Berry Critique of Frankenstein*

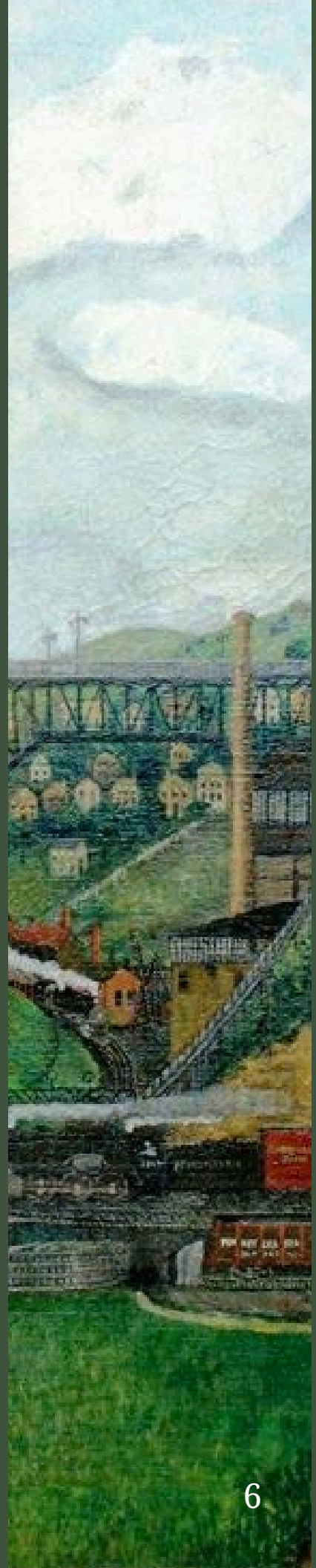
## 2.C Politics, Religion, and Identity, SHAL 109 (10)

**Chair:** Virginia Rawl

Abigail Atchley, English major at Covenant College, *"You Aren't Who You Think You Are": Self-Concept and Social Identity in Conflict in Flannery O'Connor's Everything That Rises Must Converge*

Abbie Mourey, Literature major at Patrick Henry College, *Attacking "One by One . . . the Troupe of Actors": Examining John Milton's Second Defense.*

Michael Lucchese, Liberty Fund, *"Divine Power Made Me": Dante and the Politics of Love*





# SESSION 3

Saturday, 9:00-10:30a

## 3.A What Are People For?, Rathburn Hall, Grace (28)

**Chair:** Eric Miller

Agnes Howard, Adjunct Asst. Professor in Humanities, Christ College, Valparaiso University, *Three Cut Off: Motherhood, Loss, and Membership*

Nadya Williams, Managing Editor at *Current*, *What Are People For? Wendell Berry's Vision of the Flourishing Life in a Post-Christian World*

Alexandra Frank, Grove City College, *Pastoral Nostalgia: Progress at the Cost of Membership in Wendell Berry's Hannah Coulter*

## 3.B Singing Wendell Berry's Stories, Rathburn Hall, Morledge (28)

Matt Wheeler, Singer-Songwriter, Associate Registrar and Instructor at Lancaster Bible College, *A Hard History of Love: Berry in Song*

## 3.C Moral Education, Rathburn Hall, Seminar Room (28)

**Chair:** Jeffrey Bilbro

Stephen Schuler, Professor of English at Cedarville University, *Into Which Circle of Hell Would Dante Put the Plagiarists? A Study of the Moral Language of Plagiarism Policies at American Universities*

Ethan Mannon, Associate Professor of English at Mars Hill University (Mars Hill, NC), *After Helene: Remembering in an Online and Asynchronous College Course*

Jeffrey Tabone, Assistant Professor of Honors Humanities at Indiana Wesleyan University, *A Hopeful Vocation: The Exemplary Work of Hannah Coulter*

## 3.D Wendell Berry's Poetry, SHAL 109 (10)

**Chair:** Joseph Wiebe

Laurie A. Dashnau, Professor of English and Writing and Director of the Writing Center at Houghton University, *Avian Hope in Wendell Berry's "An Entrance to the Woods" and Selected Poems*

Andrew Harvey, Professor of English at Grove City College, *Wendell Berry Climbs a Sunbeam*

Anne Ryan, Independent Scholar, *Sacred Spaces and Times in Wendell Berry's Sabbath Poems*



# SESSION 4

Saturday, 11:00-12:30p

## 4.A Inhabiting Place Well, Rathburn Hall, Morledge (28)

**Chair:** Christina Lambert

Charlie Cotherman, Grove City College, Salvaging Local Culture

John-Paul Heil, Core Fellow in History at Mount St. Mary's University,  
Does Port William speak an "Unknown Tongue"?

Eleanor Lynn, English major at Grove City College, Thoreau: The  
Cosmopolitan Homebody

## 4.B Against Reductive Thinking, Rathburn Hall, Grace (28)

**Chair:** Kristen Waha

Alayna Drollinger, English major at Cedarville University, "I Will Stand  
Like A Tree": Mapping Meditative Thinking and the Poetic Path in  
Wendell Berry's *Jayber Crow*

Joseph Wiebe, University of Alberta, *Beyond Sides: Reframing Complicity,  
Responsibility, and Being Accountable in Wendell Berry*

Bradyn Strawser, Political Science and History major at Grove City  
College, *A Rural White American Responds to White Rural Rage:  
Resentment is Toxic*

Elizabeth Stice, Professor of History, Palm Beach Atlantic University,  
*Singed Love: James Baldwin's The Fire Next Time and Wendell  
Berry's The World-Ending Fire*

## 4.C Naming Imagination's Power, Rathburn Hall, Seminar Room (28)

**Chair:** Steven Petersheim

Louise McCray, Senior Lecturer in English and Writing at Grove City  
College, *The Novel and Complicity*

Elisabeth Lasch-Quinn, Syracuse University, *Sacramental Imagination*

Conner Truitt, Grove City College, *Midsummer and Imagination*

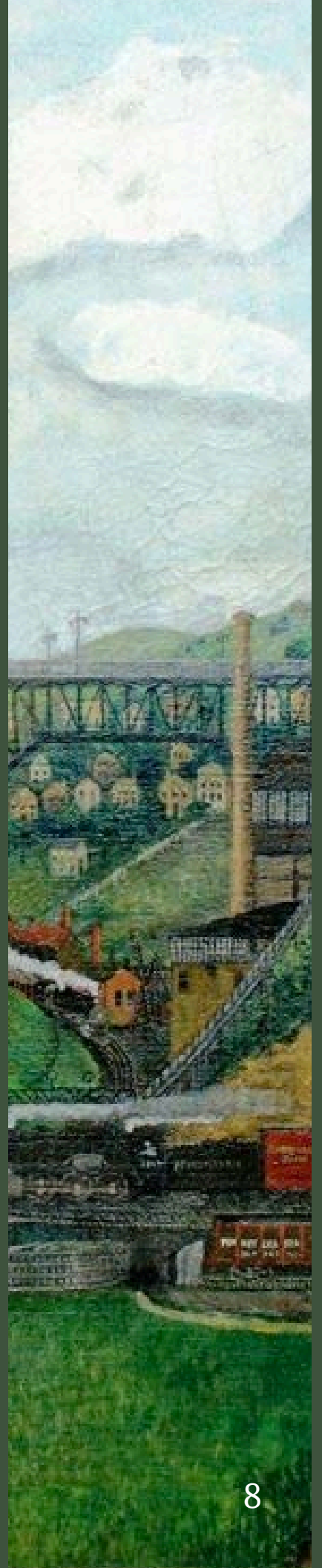
## 4.D Poetic Knowledge, SHAL 109

**Chair:** Michael Rawl

Chad Schrock, Lee University, *Doctor Donne's Childlike Fear*

Jim Cullen, Greenwich Country Day School, *In, But Not Of: Anne  
Bradstreet's Quarrel with New England*

Kristin Barbour, Grove City College, "No Longer at Ease Here in the  
Old Dispensation": Faith and Despair in the Christian Eliot



# SESSION 5

Saturday, 2:00-3:30p

## 5.A Modern Poetry and Local Music, Rathburn Hall, Morledge (28)

Chair: Eric Potter

Christina Lambert, Hillsdale College, Denise Levertov's 'daily bread':  
Poetry, Ecology, and Communion

Rebekah Barbee, Covenant College, Seeing the Unseen: How Denise  
Levertov's Poetry Convicts our Christian Complicity

Christopher Shannon, Christendom College, Rural Music, Urban Village:  
The Postwar Folk Revival in Rochester, New York

## 5.B Ethical Thinking in Fiction, Rathburn Hall, Grace (28)

Chair: Louise McCray

B. Cole Bennett, Professor and Chair, Dept. of Language and Literature,  
Abilene Christian University, "Praised but not Praiseworthy: Death of  
a Salesman, Despair, and Adam Smith's Market of Sentiment"

Molly B. Lewis, Assistant Professor of English at Regent University,  
Contingent Lives: Care for the Dying in Elizabeth Gaskell's Fiction  
Alicia McCartney, Assistant Professor of English at Cedarville University,  
"A bloody and unnatural piece of cruelty": Uses and Abuses of Just  
War Theory in Robinson Crusoe

L. Lamar Nisly, Professor of English at Bluffton University, Hope and  
Despair in Malamud's God's Grace

## 5.C Narrating Placed—and Placeless—Lives, Rathburn Hall, Seminar Room (28)

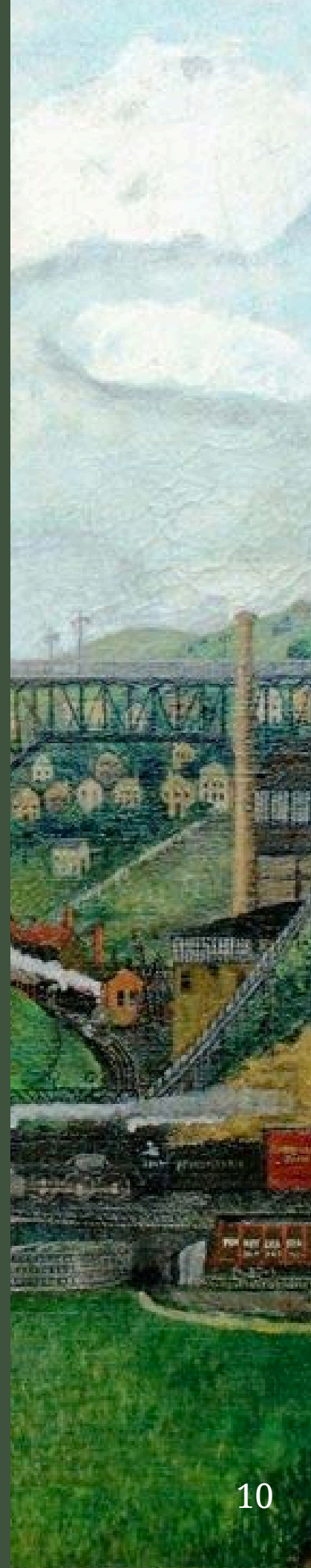
Chair: Nadya Williams

Scott Barr, Affiliate Professor of English at Ohio Christian University, "All  
the Light We Have": Illumination for Everyday Life from Wendell  
Berry

Robert Erle Barham, Covenant College, More in Wonder Than in Grief

Steven Petersheim, Associate Professor of English at Toccoa Falls College,  
Going Home Again: All is Changed

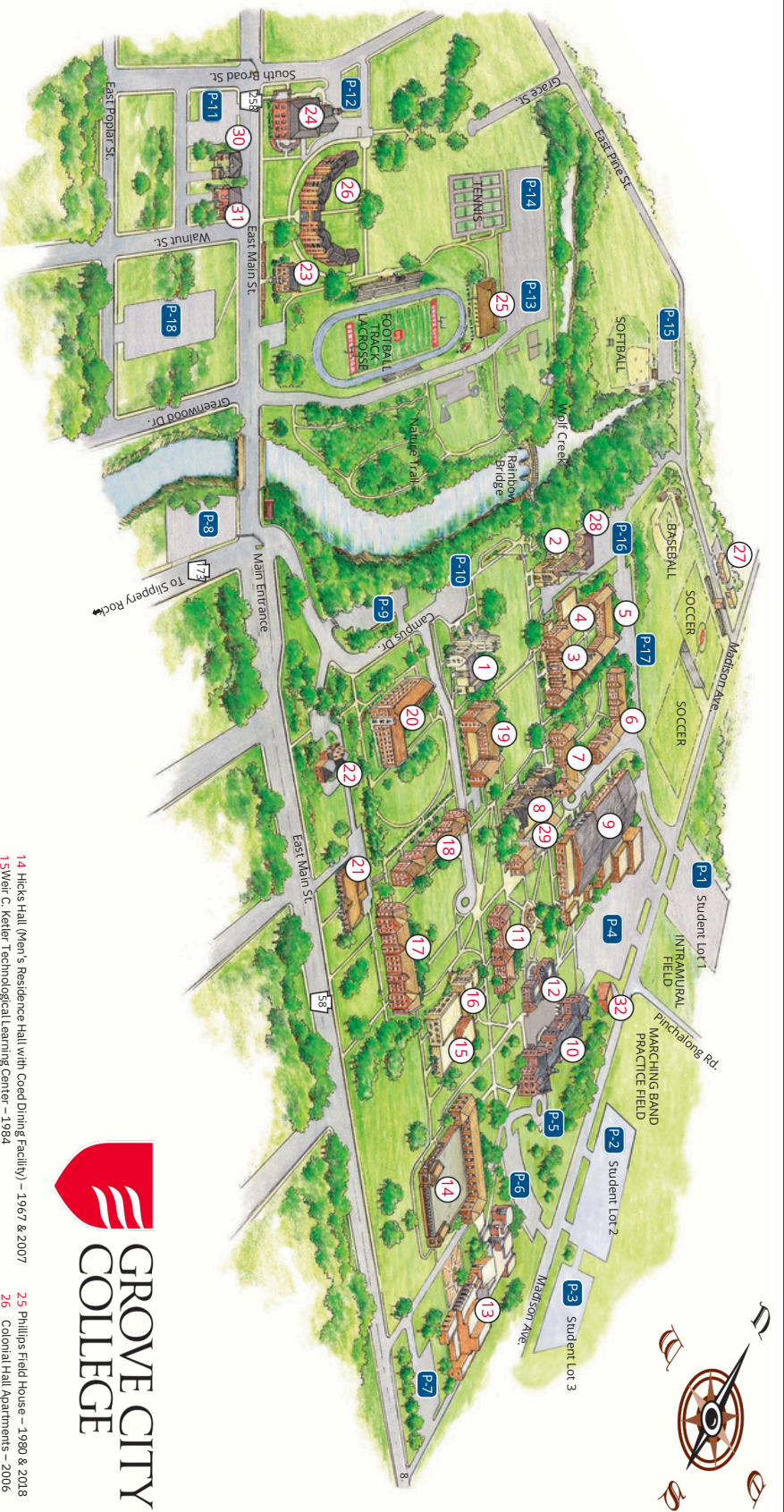
# ANDREW PETERSON



Andrew Peterson is a singer-songwriter, author, filmmaker, and founder of the RabbitRoom. Andrew has released more than ten records over the past twenty years, earning him a reputation for songs that connect with his listeners in ways equally powerful, poetic, and intimate. As an author, Andrew's books include the four volumes of the award-winning *Wingfeather Saga*, released in collectible hardcover editions through Random House in 2020 and the first season of the animated series through AngelStudios in 2022. And his creative memoirs, *Adorning the Dark* released in 2019 and *God of the Garden* released in 2021 through B&H Publishing. In 2008, Andrew founded the Rabbit Room, a nonprofit organization based in Nashville, Tennessee that fosters Christ-centered community and spiritual formation through music, story, and art.



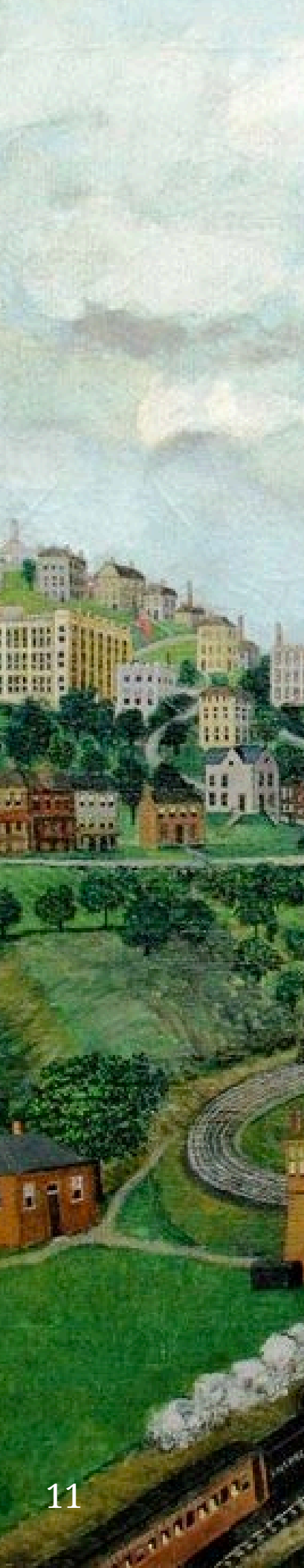
# MAP



- 1 Crawford Hall (Administrative Offices) – 1938
- 2 Habison Chapel – 1931
- 3 Mary Anderson Pew South Hall (Women's Residence Hall - Includes South Hall and South Annex) – 1937 & 1947
- 4 Mary Anderson Pew West Hall (Women's Residence Hall with Coed Dining Facility) – 1950 & 2014
- 5 Mary Anderson Pew North Hall (Women's Residence Hall) – 1961 & 2011
- 6 Mary Ethel Pew Hall (Women's Residence Hall) – 1981 & 2015
- 7 Helen Harker Hall (Women's Residence Hall) – 1971
- 8 Rockwell Hall of Science – 1931
- 9 Physical Learning Center & Alumni Hall ( Career Services and Athletic Offices, Arena, Competition and Recreation Pools, Fitness Center, Bowling Alley and Men's Residence Hall on 2nd Floor) – 1953 & 1988
- 10 Staley Hall of Arts & Letters – 2002
- 11 Hoyt Hall of Engineering – 1966
- 12 Breen Student Union (Student Life & Learning Offices, Gedunk Cafe, Bookstore and Mailroom) – 2004
- 13 J. Howard Pew Fine Arts Center – 1976 & 2002
- 14 Hicks Hall (Men's Residence Hall with Coed Dining Facility) – 1967 & 2007
- 15 Wier C. Ketter Technological Learning Center – 1984
- 16 Henry Buhl Library – 1954
- 17 Hopeman Hall (Men's Residence Hall) – 1950
- 18 Lincoln Hall (Men's Residence Hall) – 1941
- 19 Isaac C. Keller Hall (Men's Residence Hall) – 1932
- 20 Memorial Hall (Men's Residence Hall) – 1996
- 21 Zerbe Health Center – 1970
- 22 President's House – 2005
- 23 Cunningham House – 1854
- 24 Carnegie Alumni Center (Institutional Advancement; includes Alumni Relations and Development, Marketing and Communications Offices) – 1900 & 2009
- 25 Phillips Field House – 1980 & 2018
- 26 Colonial Hall Apartments – 2006
- 27 Facilities Management and Rathburn Hall – 1964 & 1994
- 28 Rathburn Hall – 2012
- 29 STEM Hall – 2013
- 30 Stewart House – 1920
- 31 Isaac House – 1930
- 32 Central Utility Plant – 1978

**P** – Parking

Rev. 3/2024



# LUNCH OPTIONS

MAP Dining Hall (4)  
Chick-Fil-A (12)  
Hicks Dining Hall (14)

**Note:** Chick-Fil-A may be busy, so MAP is likely the best option

# BOOKSTORE

**Friday:** The bookstore will have a table in Rathburn (28) selling conference-related books from 9-11am and 12:30-3:00pm

**Saturday:** The bookstore will be open in their location in the Breen Student Union (12) from 9:30am-1pm

# PARKING INFO

During the conference, please park in the lot by Rathburn (P-16). Overflow parking is available by Staley Hall of Arts and Letters (P-4).

# SHUTTLE INFO

**Friday:** A shuttle departs from the hotel at 8:15 a.m. In the evening, it departs to return from Rathburn at 9:30 p.m.

**Saturday:** A shuttle departs from the hotel in the morning, at 8:15 a.m. Be at Rathburn ready to head back to the hotel at 3:45p.m.

**Note:** The shuttle only has 12 seats.

